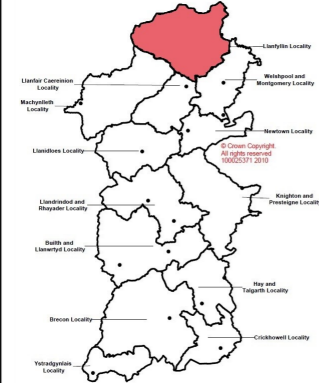



Review of Older People day time activities, Business Intelligence Insight: Llanfyllin



The Community



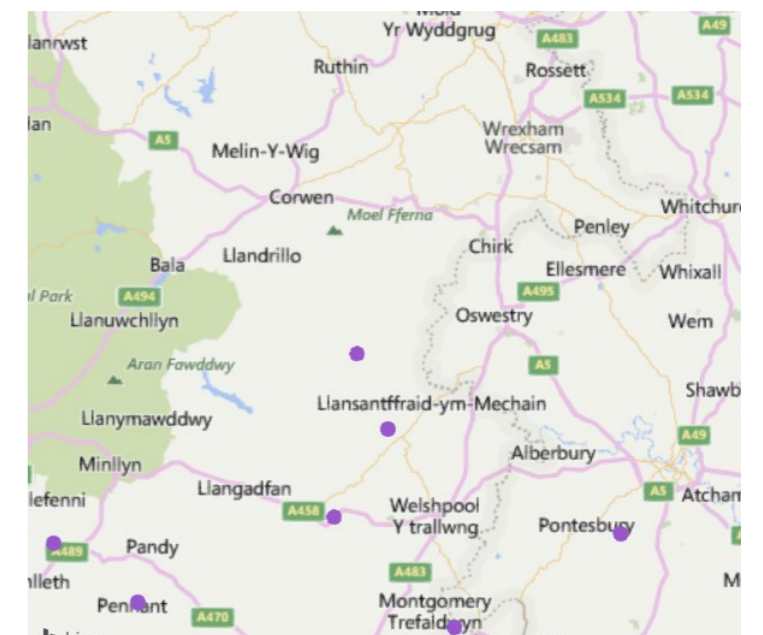
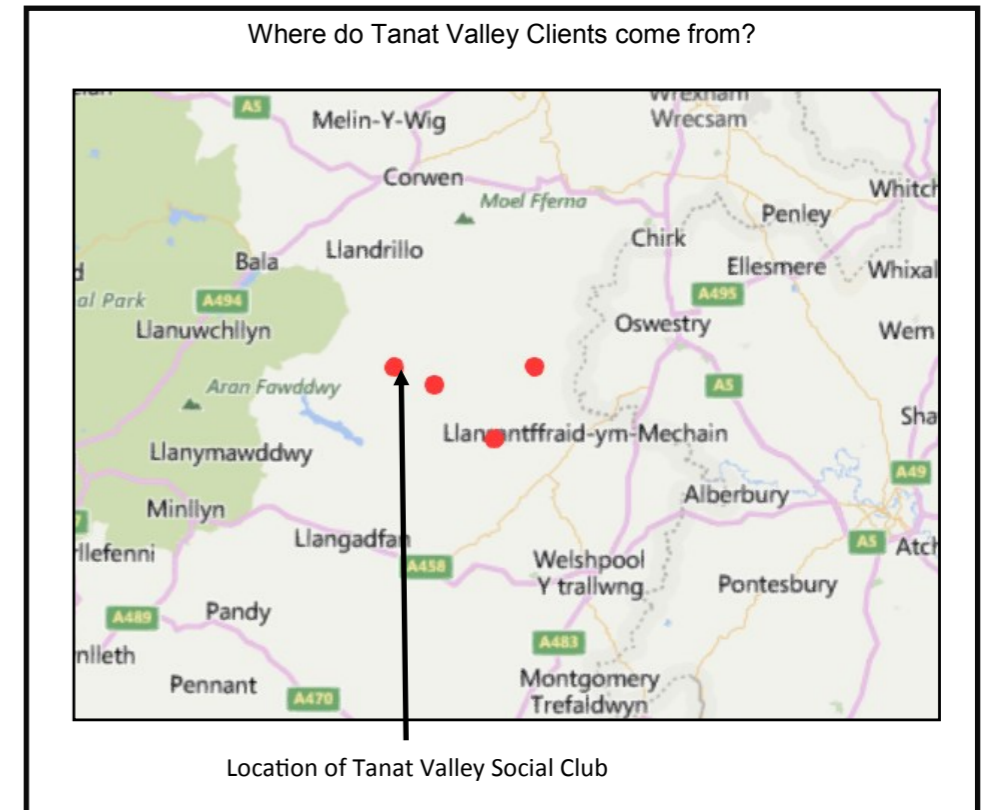
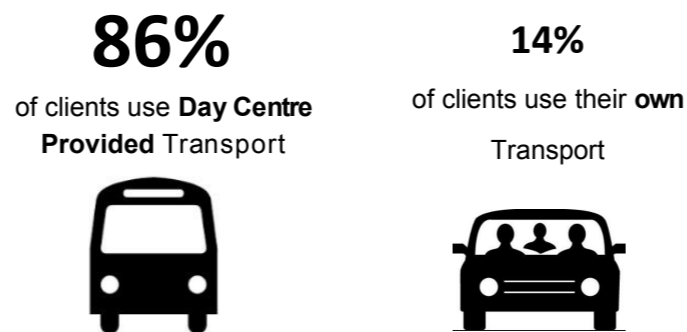
- The current population is 9,217^{*1} and the average age of people in the locality is 46 years (Powys average 45). The population is made up of 50% Females and 50% Males
- 26.7% of the population are over 65 (Powys average is 25.3%), whilst people over 85 make up 3.4% of the population (Powys average is 3.4%). Overall the population is expected to increase by 1.8% by 2036 (from 9,203 in 2013 to 9,365; Powys average is 1.4% increase)^{*2}. In contrast, the over 85 population is expected to rise more steeply, with the population moving by 165% from 289 to 766 over the same period.
- Based on Dementia prevalence trends for Powys^{*3} and population distributions, it is estimated that there are around 166 people with dementia in this locality and that this will rise to 193 and then 306 by 2020 and 2035 respectively.
- 9.6% (452 people) of working residents are employed in Care/Leisure industry—lower than the Powys average 10.1 % (500 per locality)^{*4}.
- Higher than average travel time to an NHS Dentist (86 minutes, Powys Average 55 minutes) and GP surgery (62 minutes, Powys Average 50 minutes)^{*5}.
- 29% of residents in this locality feel satisfied with care for older people/the elderly (average for all Powys Localities = 28%)*⁶
- 78% of residents feel satisfied that this locality is a place where people look out for and support each other (average for all Powys Localities = 81%)*⁶
- 80% of residents in this locality say that they or a family member participate (either regularly or sometimes) in local community events and activities (average for all Powys Localities = 84%)*⁶

References	
1. 2014 Mid Year Population Estimates, ONS	5. Welsh Index of Multiple Deprivation, 2011. PCC Research & Information Unit Report RWIMD11/0212
2. 2011 based population projections for Local Authorities in Wales, Welsh Government, 2013	6 Powys County Council Residents Satisfaction Survey, 2015
3. www.daffodilcymru.org.uk	
4. Annual Survey of Hours and Earnings (ASHE), ONS, 2011	

Tanat Valley Social Club Clients

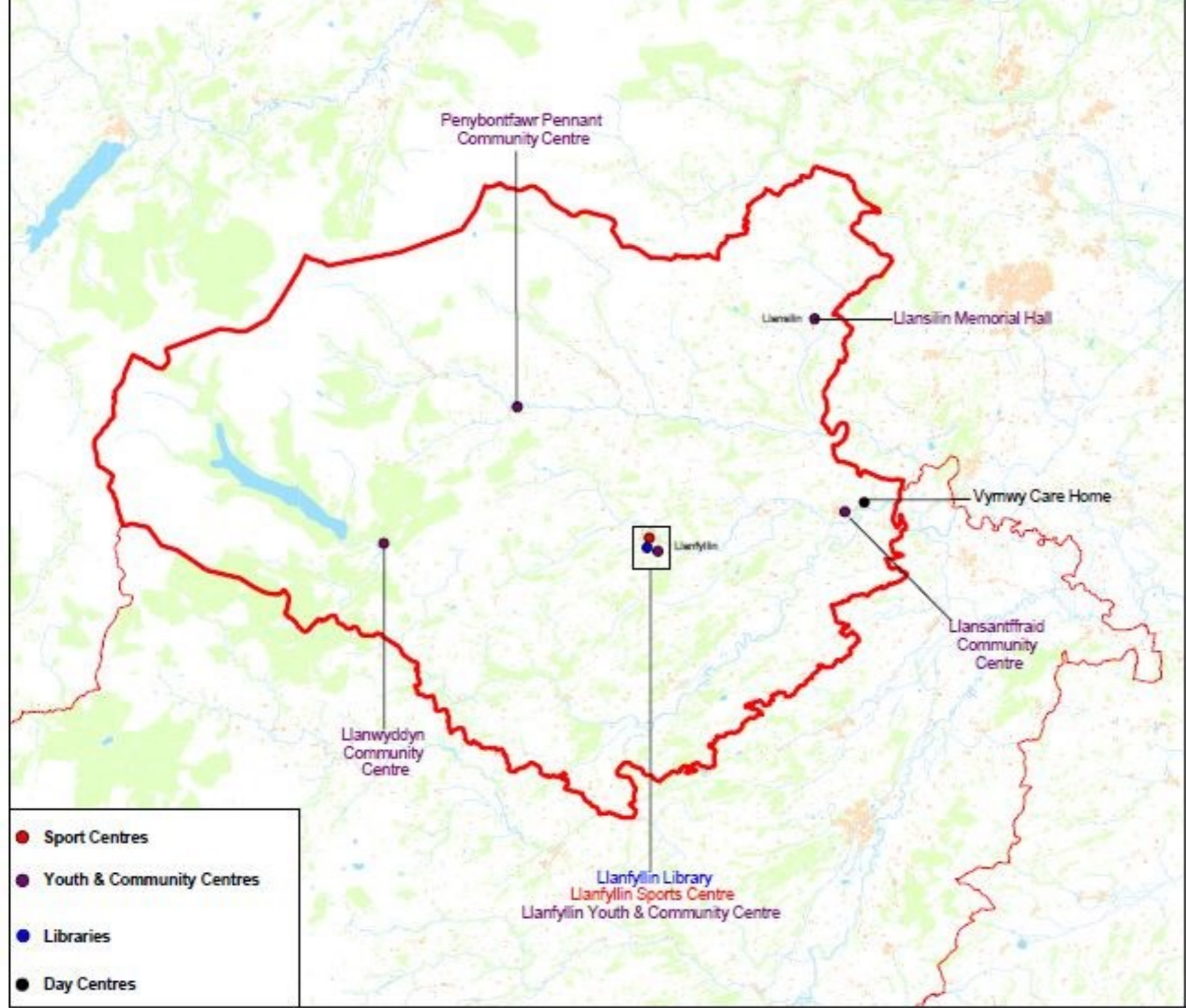
- **Tanat Valley Social Club** takes place in a public house in Llangynog
- In 2015, 7 clients were on the register
- **43%** of the clients are female
- Clients have an average age of **84** years

How do Clients Travel to PCC Day Centres?



Map of Preventative Services for Adults and Older People

© Crown copyright and database rights 2016 Ordnance Survey 100020371
 © Hafellnau y Gorn a bawlio corff data 2016 Arddal Ordnance 100020371
 Additional information © Powys County Council 2016 No additional copies should be made without the permission of the Council.
 Gwybodaeth ychwanegol © Dyngor Sir Powys 2016 Ni ddylid gennud cerbydau gogleu ychwanegol heb ganiatâd y Dyngor.



- Sport Centres
- Youth & Community Centres
- Libraries
- Day Centres



LLANFYLLIN AREA